

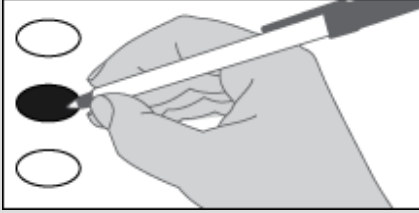


Official Ballot
 General Election
 Benton County, Washington
 November 8, 2022

Sample

Instructions

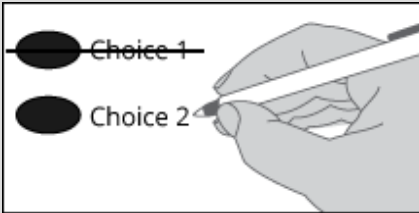
How to vote



Use a dark blue or black ink pen to completely fill in the oval next to your choice.

Vote for one in each race or measure. If you vote for more than one, no votes will be counted for that race or measure.

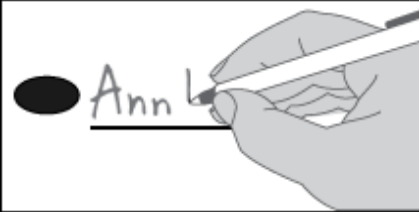
How to correct a mistake



To make a correction, draw a line through the entire choice.

You then have the option of making a different choice by completely filling in another oval.

Optional Write-In



To vote for a candidate not listed for that race, fill in the oval to the left of the "Write-In" and print the name on the line.

How to return your ballot:

Insert ballot into security sleeve.

Insert security sleeve into the ballot return envelope.

Sign and date the voter declaration using the instructions on the return envelope.

NOTE: WAC 434-230-015 prohibits the use of a Power of Attorney to satisfy the signature requirements on the return envelope. If unable to sign, voter should follow the instructions on the return envelope for having two witnesses.



Who donates to campaigns?

View contributors for candidates and measures

Public Disclosure Commission

www.pdc.wa.gov
 Toll Free (877) 601-2828

Advisory Votes

**Advisory Vote No. 39
 Engrossed Substitute Senate Bill 5974**

The legislature increased, without a vote of the people, the tax on aircraft fuel from 11 cents to 18 cents per gallon, costing \$14 million in its first ten years, for government spending. This tax increase should be:

- Repealed
- Maintained

**Advisory Vote No. 40
 Engrossed Substitute House Bill 2076**

The legislature imposed, without a vote of the people, premiums on "transportation network companies" to provide workers compensation to their drivers, costing an indeterminate amount in its first ten years, for government spending. This tax increase should be:

- Repealed
- Maintained

READ: Each candidate for partisan office may state a political party that he or she prefers. A candidate's preference does not imply that the candidate is nominated or endorsed by the party, or that the party approves of or associates with that candidate.

**Federal Offices
 Partisan Offices**

**United States
 U.S. Senator**

- Patty Murray**
(Prefers Democratic Party)
- Tiffany Smiley**
(Prefers Republican Party)
- Write-In

**Congressional District 4
 U.S. Representative**

- Dan Newhouse**
(Prefers Republican Party)
- Doug White**
(Prefers Democratic Party)
- Write-In

**State Offices
 Partisan Offices**

**Washington State
 Secretary of State
 2 Year Unexpired Term**

- Steve Hobbs**
(Prefers Democratic Party)
- Julie Anderson**
(Prefers Nonpartisan Party)
- Write-In

**Legislative Offices
 Partisan Offices**

**Legislative District 8
 State Senator**

- Matt Boehnke**
(Prefers Republican Party)
- Ronni Batchelor**
(Prefers Independent Party)
- Write-In

**Legislative District 8
 State Representative Position 1**

- Stephanie Barnard**
(Prefers Republican Party)
- Patrick Guettner**
(Prefers Republican Party)
- Write-In

**Legislative District 8
 State Representative Position 2**

- April Connors**
(Prefers Republican Party)
- Joe Cotta**
(Prefers Republican Party)
- Write-In

**Legislative District 15
 State Senator**

- Nikki Torres**
(Prefers Republican Party)
- Lindsey Keesling**
(Prefers Democratic Party)
- Write-In

**Legislative District 15
 State Representative Position 1**

- Bruce Chandler**
(Prefers Republican Party)
- Write-In

**Legislative District 15
 State Representative Position 2**

- Bryan Sandlin**
(Prefers Republican Party)
- Write-In

**Legislative District 16
 State Representative Position 1**

- Mark Klicker**
(Prefers Republican Party)
- Jeff Strickler**
(Prefers Democratic Party)
- Write-In

Vote Both Sides

**Legislative District 16
State Representative Position 2**

Skylar Rude
(Prefers Republican Party)

Jan Corn
(Prefers Democratic Party)

Write-In

**Supreme Court
Justice Position 5**

Barbara Madsen

Write-In

Local Measure

PROPOSITION 1

CITY OF PROSSER

The Prosser City Council adopted Ordinance No. 22-3187, regarding voter approval for financing certain capital improvements. If approved, this proposition would authorize financing to replace the City's Police Station and City Hall, including land acquisition, design, construction and equipping of public space for community meetings, public safety, utilities, public works, and other City services. It would authorize issuance of not more than \$16.8 million of general obligation bonds maturing within 31 years payable by the levy of the annual levy of excess property taxes, all as provided in Ordinance No. 22-3187.

Should this proposition be approved?

Yes

No

**County Offices
Partisan Offices**

**Supreme Court
Justice Position 6**

G. Helen Whitener

Write-In

**Benton County
Assessor**

Bill Spencer
(Prefers Republican Party)

Write-In

**Court of Appeals
Division 3, District 2
Judge Position 1**

George Fearing

Write-In

**Benton County
Auditor**

Brenda Chilton
(Prefers Republican Party)

Write-In

**Benton, Franklin Superior Court
Judge Position 4**

George F. Cicotte

Norma Rodriguez

Write-In

**Benton County
Clerk**

Josie Delvin
(Prefers Republican Party)

Write-In

**Benton, Franklin Superior Court
Judge Position 6**

Jacqueline I. Stam

Write-In

**Benton County
Commissioner District 2**

Michael Alvarez
(Prefers Republican Party)

William "Bill" Jenkin
(Prefers Republican Party)

Write-In

**Benton County
District Court Judge 1**

Terry M. Tanner

Write-In

**Benton County
Coroner**

William "Bill" Leach
(Prefers Republican Party)

Write-In

**Benton County
District Court Judge 2**

James (Jim) Bell

Write-In

**Benton County
Prosecuting Attorney**

Eric Eisinger
(Prefers Republican Party)

Ryan Lukson
(Prefers Republican Party)

Write-In

**Benton County
District Court Judge 3**

Dan Kathren

Write-In

**Benton County
Sheriff
4 Year Short & Full Term**

Thomas J. Croskrey
(Prefers Republican Party)

Write-In

**Benton County
District Court Judge 4**

John S. Ziobro

Write-In

**Benton County
Treasurer**

Kenneth Spencer Jr.
(Prefers Republican Party)

Write-In

**Benton County
District Court Judge 5**

Jennifer (Lampson) Azure

Write-In

**Judicial Offices
Nonpartisan Offices**

**Public Utility District
Nonpartisan Office**

**Supreme Court
Justice Position 1**

Mary I. Yu

Write-In

**Benton County
PUD Commissioner Position 1**

Lori Sanders

Write-In

Vote Both Sides