

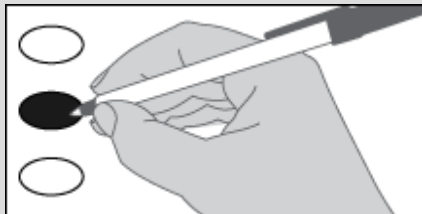


Official Ballot
 Special Election
 Benton County, Washington
 February 14, 2023

Sample

Instructions

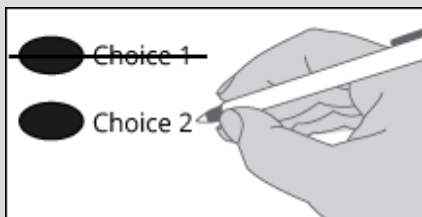
How to vote



Use a dark blue or black ink pen to completely fill in the oval next to your choice.

Vote for one in each measure. If you vote for more than one, no votes will be counted for that measure.

How to correct a mistake



To make a correction, draw a line through the entire choice.

You then have the option of making a different choice by completely filling in another oval.

How to return your ballot:

Insert ballot into security sleeve.

Insert security sleeve into the ballot return envelope.

Sign and date the voter declaration using the instructions on the return envelope.

NOTE: WAC 434-230-015 prohibits the use of a Power of Attorney to satisfy the signature requirements on the return envelope. If unable to sign, voter should follow the instructions on the return envelope for having two witnesses.

For a list of the people and organizations that donated to state and local candidates and ballot measure campaigns, visit www.pdc.wa.gov.

School District Measure

PROPOSITION NO. 1
KENNEWICK SCHOOL DISTRICT NO. 17
 EDUCATIONAL PROGRAMS AND OPERATIONS LEVY

The Board of Directors of Kennewick School District No. 17 adopted Resolution No. 1, 2022-2023, concerning a proposition to finance educational programs and operations expenses. This proposition would authorize the District to meet the educational needs of its students by levying the following excess taxes, on all taxable property within the District, for educational programs and operations expenses not funded by the State of Washington:

<u>Collection Year</u>	<u>Estimated Levy Rate/\$1,000 Assessed Value</u>	<u>Levy Amount</u>
2024	\$1.73	\$23,000,000
2025	\$1.68	\$23,850,000
2026	\$1.63	\$24,700,000

all as provided in Resolution No. 1, 2022-2023. Should this proposition be approved?

Levy Yes

Levy No

PROPOSITION NO. 1
PATERSON SCHOOL DISTRICT NO. 50
 REPLACEMENT EDUCATIONAL PROGRAMS AND OPERATION LEVY

The Board of Directors of Paterson School District No. 50 adopted Resolution No. 03-2022, concerning a proposition to finance educational programs and operation expenses. This proposition would authorize the District to levy the following excess taxes, in place of an expiring levy, on all taxable property within the District, for support of the District's educational programs and operation expenses not funded by the State of Washington:

<u>Collection Year</u>	<u>Estimated Levy Rate/\$1,000 Assessed Value</u>	<u>Levy Amount</u>
2024	\$0.68	\$360,403
2025	\$0.68	\$369,413
2026	\$0.68	\$378,648

all as provided in Resolution No. 03-2022. Should this proposition be approved?

Levy Yes

Levy No

**PROPOSITION NO. 1
KIONA-BENTON CITY SCHOOL DISTRICT NO. 52
EDUCATIONAL PROGRAMS AND OPERATION REPLACEMENT
LEVY**

The Board of Directors of Kiona-Benton City School District No. 52 adopted Resolution No. 7-2022, concerning a proposition to finance educational programs and operation expenses. This proposition would authorize the District to levy the following excess taxes, in place of an expiring levy, on all taxable property within the District, for educational programs and operation expenses not funded by the State (including athletics, music, technology support, special education, class size, nurses, counselors, safety staff, advanced courses, and extracurricular activities):

<u>Collection Year</u>	<u>Estimated Levy Rate/\$1,000 Assessed Value</u>	<u>Levy Amount</u>
2024	\$1.50	\$1,747,483
2025	\$1.50	\$1,870,680

all as provided in Resolution No. 7-2022. Should this proposition be approved?

- Levy Yes
 Levy No

**PROPOSITION NO. 1
FINLEY SCHOOL DISTRICT NO. 53
EDUCATIONAL PROGRAMS AND OPERATION LEVY**

The Board of Directors of Finley School District No. 53 adopted Resolution No. 2022-06, concerning a proposition to finance educational programs and operation expenses. This proposition would authorize the District to levy the following excess taxes, on all taxable property within the District, for support of the District's educational programs and operation expenses not funded by the State of Washington:

<u>Collection Year</u>	<u>Estimated Levy Rate/\$1,000 Assessed Value</u>	<u>Levy Amount</u>
2024	\$2.25	\$1,430,000
2025	\$2.27	\$1,475,000

all as provided in Resolution No. 2022-06. Should this proposition be approved?

- Levy Yes
 Levy No

**PROPOSITION NO. 1
RICHLAND SCHOOL DISTRICT NO. 400
CAPITAL LEVY FOR SAFETY AND SECURITY ENHANCEMENTS
AND HIGH SCHOOL FACILITIES EVALUATION AND DESIGN**

The Board of Directors of Richland School District No. 400 adopted Resolution No. 951, concerning a proposition to improve safety, security and educational opportunities. This proposition would authorize the District to levy the following excess taxes, on all taxable property within the District, to make District-wide safety and security enhancements (single point entries, secure vestibules, surveillance, access controls) and evaluate/design new and renovated high school facilities:

<u>Collection Year</u>	<u>Estimated Levy Rate/\$1,000 Assessed Value</u>	<u>Levy Amount</u>
2024	\$0.31	\$3,900,000
2025	\$0.30	\$3,900,000
2026	\$0.29	\$3,900,000
2027	\$0.28	\$3,800,000
2028	\$0.27	\$3,750,000
2029	\$0.27	\$3,750,000

all as provided in Resolution No. 951. Should this proposition be approved?

- Levy Yes
 Levy No